



STRONGER
Together



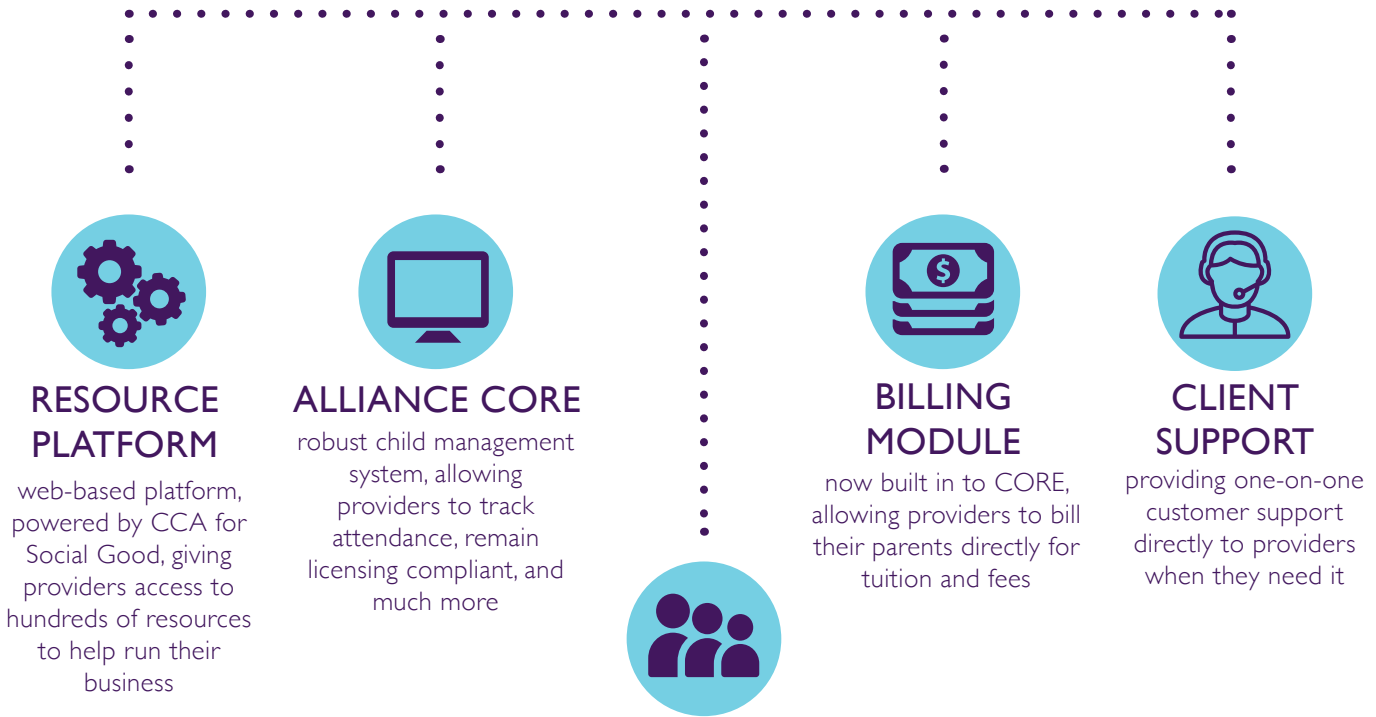


Our Mission

Early Learning Ventures (ELV) is a nonprofit organization dedicated to expanding access to quality, affordable child care. The organization focuses its efforts on improving the quality of child care programs offered at center and home-based facilities across Colorado—85 percent of which are small, independent businesses that lack the infrastructure and resources to invest in quality improvements.

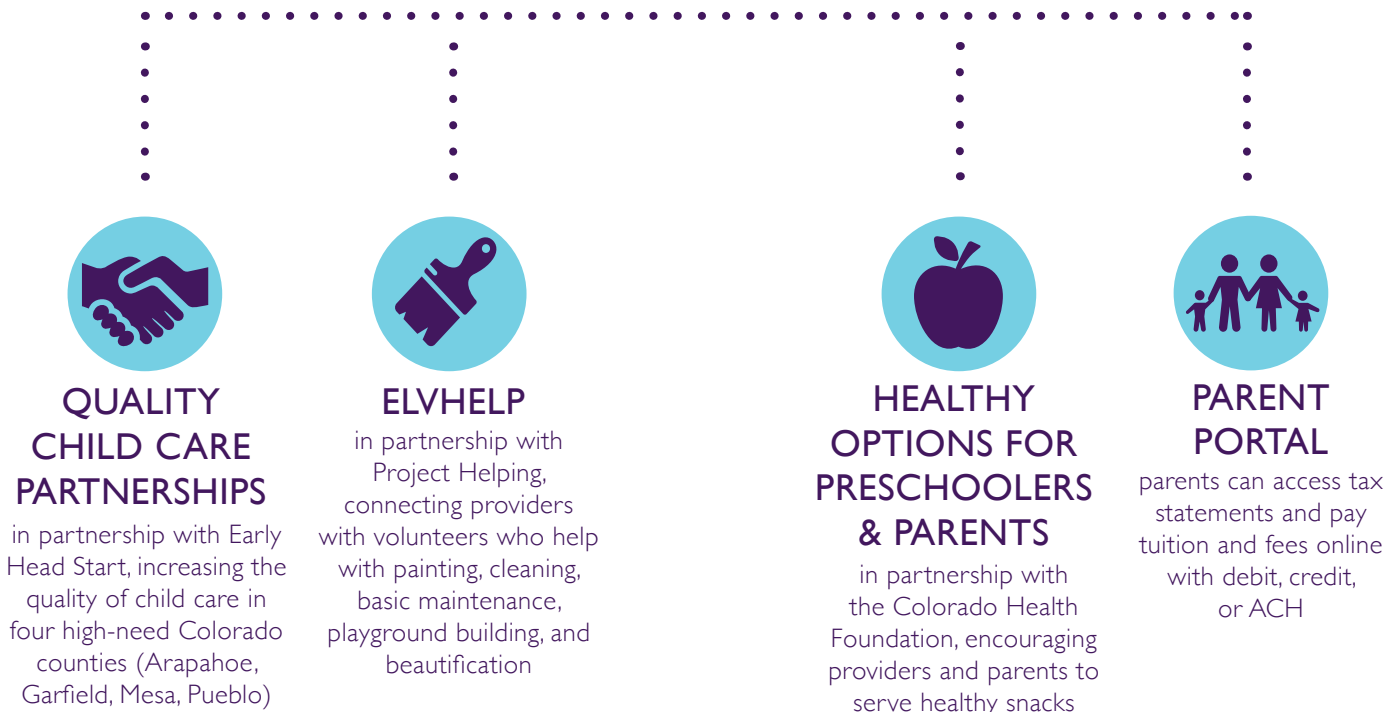
Strong Business Services

Through business support and services, efficiencies, and regulatory compliance, ELV helps save child care providers time and money, thus building their capacity so they can invest more into improving the quality of care and education they provide.



Strong Family Services

We work hand-in-hand with providers and families to bring enhanced services and resources directly to the learning environments to ensure all children reach their full potential.



2017 ELV

BY THE NUMBERS



37,462

CHILDREN IMPACTED



1,845

RESOURCE PLATFORM USERS



235

ALLIANCE CORE USERS



600

LICENSED EARLY LEARNING
PROGRAMS SERVED



2.8

AVG. CO SHINES RATING
AFTER USING CORE > 1 YEAR

International Learning Center

AN INTERVIEW WITH AMGAD ABURASS, BUSINESS MANAGER

International Learning Center has been providing child care to children ages 0-5 for four years. Located in a diverse area of Denver, CO, International Learning Center currently serves 77 CCCAP children and teaches three languages (English, Spanish, and Arabic). The center has been using ELV services since January 2018, and they value the time and cost savings they experience from using Alliance CORE.

COLORADO SHINES RATING: 

1. Why did you decide to start working in child care?

My wife and I love children. So, with my wife's previous experience in child care, we wanted to start helping the children in our community. Our community is very diverse, and we serve a lot of low income families and refugees. My wife is the center's director and works directly with the parents and families, while I support human resources and external communication.

2. Since your partnership began with ELV in January 2018, what improvements have you seen in your child care?

Being able to sign children in and out using CORE has been a huge relief for us. We can see which children are in the center and can easily move them from class to class. Also, we love how CORE alerts us to expired physical examinations and when immunizations are due. We're also in the process of moving all of our hard copy documentation into digital copies. This will save us money on overhead costs and a lot of time for myself. I won't be spending as much time going through paperwork and spreadsheets. CORE is truly a convenient tool for us.

3. What are you most proud of?

The diversity of our center—it's in our name. We teach three languages: English, Spanish, and Arabic.

4. So far, what has your experience working with ELV been?

ELV's Client Support has been really great. They always pick up the phone and are always quick to help us with whatever we need.

5. Anything else you'd like to add?

We are looking forward to continue to work with ELV so we can better serve the children in our community.



400

EHS-ELIGIBLE
CHILDREN SERVED

8.4%

% OF INCOME ELIGIBLE
POPULATION SERVED



373

FAMILIES SERVED

100%

AVERAGE MONTHLY
ENROLLMENT
(% OF FUNDED ENROLLMENT)



100%

OF CHILDREN
RECEIVED MEDICAL
& DENTAL SCREENINGS



2016-17 EHS
BY THE NUMBERS

Children's Palace Learning Center

AN INTERVIEW WITH ANGIE ROGERS, CENTER DIRECTOR

Children's Palace Learning Center has been providing child care to children ages 0-5 in Pueblo West, CO, for more than a decade. An ELV Early Head Start Child Care Partner (EHS-CCP) since 2015, Children's Palace has been able to increase the quality of their care to the 87 children and families they serve through medical and dental exams, infant and toddler teacher education and training, teacher incentives to increase retention, curriculum and assessment implementation, and much more. This sets each child's development trajectory toward kindergarten readiness and successful lifelong learning.

COLORADO SHINES RATING: 

1. How long have you been with Children's Palace Learning Center, and what made you interested in child care in the first place?

I've been with the center for 12 years. I was going into nursing, but then I started working with my grandmother, who worked with infants. That's when I decided to change my profession.

2. Since your partnership began with ELV in 2015, what improvements have you seen in your child care?

We've received assistance for upgrades to our infant playground, including the addition of artificial turf and new shading. ELV also assists us with getting our teachers infant/toddler trained, in addition to providing various training opportunities during the year. With ELV's assistance, we've been able to provide dental, hearing, and vision screening for our children. Additionally, we've been able to give teacher and leadership bonuses to help us retain quality. Plus, our parents get to realize the benefit of assistance with diapers, wipes, and formula.

3. What are you most proud of?

The number of years Children's Palace has been in business. And to think...we started out with the barest of resources! Initially, we did not have CCCAP or the CACFP. But, we grew with the business and found resources that would help our children, families, and our center.

4. What gets you out of bed every morning to come to work?

Being able to be a part of a child's learning process in such an early stage in his/her life. Seeing their faces when they accomplish something new is what makes my day and puts a smile on my face.

5. Anything else you'd like to add?

I love the resources on ELV's Resource Platform—whether it's handouts for the parents, sample lesson plans, or even some of the forms!

Family Involvement Activities for 2016-17



COOKING
MATTERS
CLASSES



FINANCIAL
ACTIVITIES



PARENTING
CURRICULUM



COFFEE
TALKS



LITERACY
NIGHTS



HEALTHY OPTIONS
FOR PRESCHOOLERS
& PARENTS CLASSES



HEALTH & WELLNESS
ACTIVITIES/FAIRS



ZUMBA CLASSES



LEADERSHIP
OPPORTUNITIES





Kindergarten Readiness

Through coordinated services, a sustainable business practice, and the implementation of high quality standards, ELV is able to support both children and families in a holistic and timely manner. ELV's efforts to ensure kindergarten readiness include:

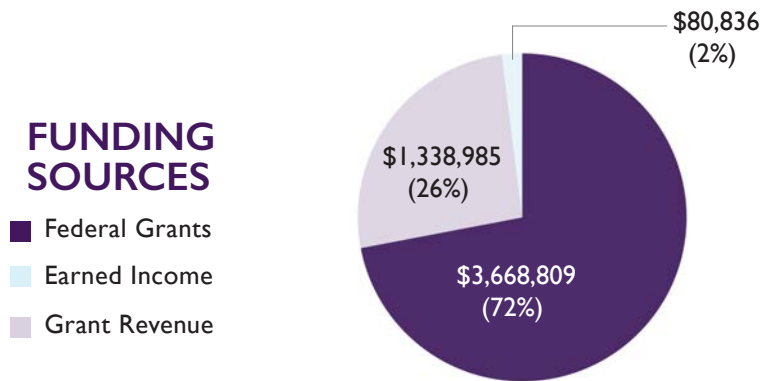
1. Supporting more than 140 teachers in pursuing EHS teacher qualifications. To date, 126 teachers at EHS-CCP sites have already achieved this by obtaining either the Child Development Associate Credential with an emphasis on Infant-Toddler or Family Child Care, or through completing the equivalent college level coursework with an emphasis on infant and toddler development. This groundwork provides a pathway for continuing education in pursuit of longer term professional goals and helps to support ECE educators in using developmentally appropriate practice to individualize the learning paths of children served at EHS-CCP sites.

2. Implementing Creative Curriculum® for Infants, Toddlers & Twos to support classroom learning. Coupled with MyTeachingStrategies™ as the assessment tool, this pairing allows for authentic assessment to influence the learning and development of each child.

3. Supporting medical and wellness visits, including hearing, dental, and developmental screenings. In the 2016-17 EHS program year, 100% of children at ELV's EHS-CCP sites received medical and dental screenings. Since the first few years of life are critical for a child's health and development, these screenings help identify health issues early, thus reducing their impact later in life.

Early Learning Ventures CY 2017 Financials

	BUDGET	ACTUALS
Administration	\$879,080	\$682,634
Program	\$4,348,106	\$4,272,665
Fundraising	\$63,983	\$41,541
TOTAL	\$5,276,186	\$4,996,840



Early Head Start PY 2016-17 Financials

	BUDGET	ACTUALS
Administration	\$374,845	\$327,328
Program	\$2,992,162	\$2,892,485
TOTAL	\$3,367,007	\$3,219,813

Federal Review

ELV participated in its first Federal Monitoring Review in April 2017, as part of its Early Head Start – Child Care Partnerships grant and has achieved general compliance with the federal requirements based on the criteria detailed in the FY 2016 EHS–CCP Monitoring Protocol that was used as a guide for the federal monitoring event. The Monitoring Protocol and the Monitoring event covered federal compliance related to the following areas: Fiscal Management, Health and Safety, Education and Child Development Service, Family and Community Engagement, and Program Management and Quality Improvement.



EHS-CCP Sites & Counties Served 2016-17

Sites are listed by county and include their Colorado Shines Rating as of July 2018. Colorado Shines is a quality rating and improvement system for all of Colorado's licensed early learning programs. It encourages and supports programs to improve their quality and to connect with families looking for quality care for their children. Ratings range from Level 1-5, with 5 being the highest.

ARAPAHOE

Creative Learning Academy; Level 4
Kids' Castle Child Care; Level 5
Little Angel's; Level 4
New Legacy Charter School; Level 4
Rising Star Early Learning Center; Level 4

GARFIELD

Caring Kids Preschool; Level 3
Faith Lutheran; Level 3
Fuller Child Care; Level 5
Little Bears; Level 2
Little Blue Preschool; Level 3
Lizzy's Child Care; Level 4
Yampah Mountain Children's Center; Level 4

MESA

Aunt Patty's Child Care; Level 2
Christian Community School; Level 2
Country Care; Level 2
Country Kids; Level 2
District 51 Young Parent; Level 2
Grand Valley Child Care; Level 2
Jennifer's Child Care; Level 2
Kinder Haus Child Care; Level 4
Lil Kurtain Klimbers; Level 3
Lil Peaches; Level 2
Little Imaginations; Level 2
We Kare A Lot; Level 2
Wishes and Dreams; Level 4

PUEBLO

Children's Palace; Level 4
Imagination Station, LLC; Level 2
Kinderkirk Preschool; Level 3
Word of Faith Life Center Academy; Level 4
Yolanda Gonzales; Level 2



18 Inverness Place East
Englewood, CO 80112
info@earlylearningventures.org
www.earlylearningventures.org